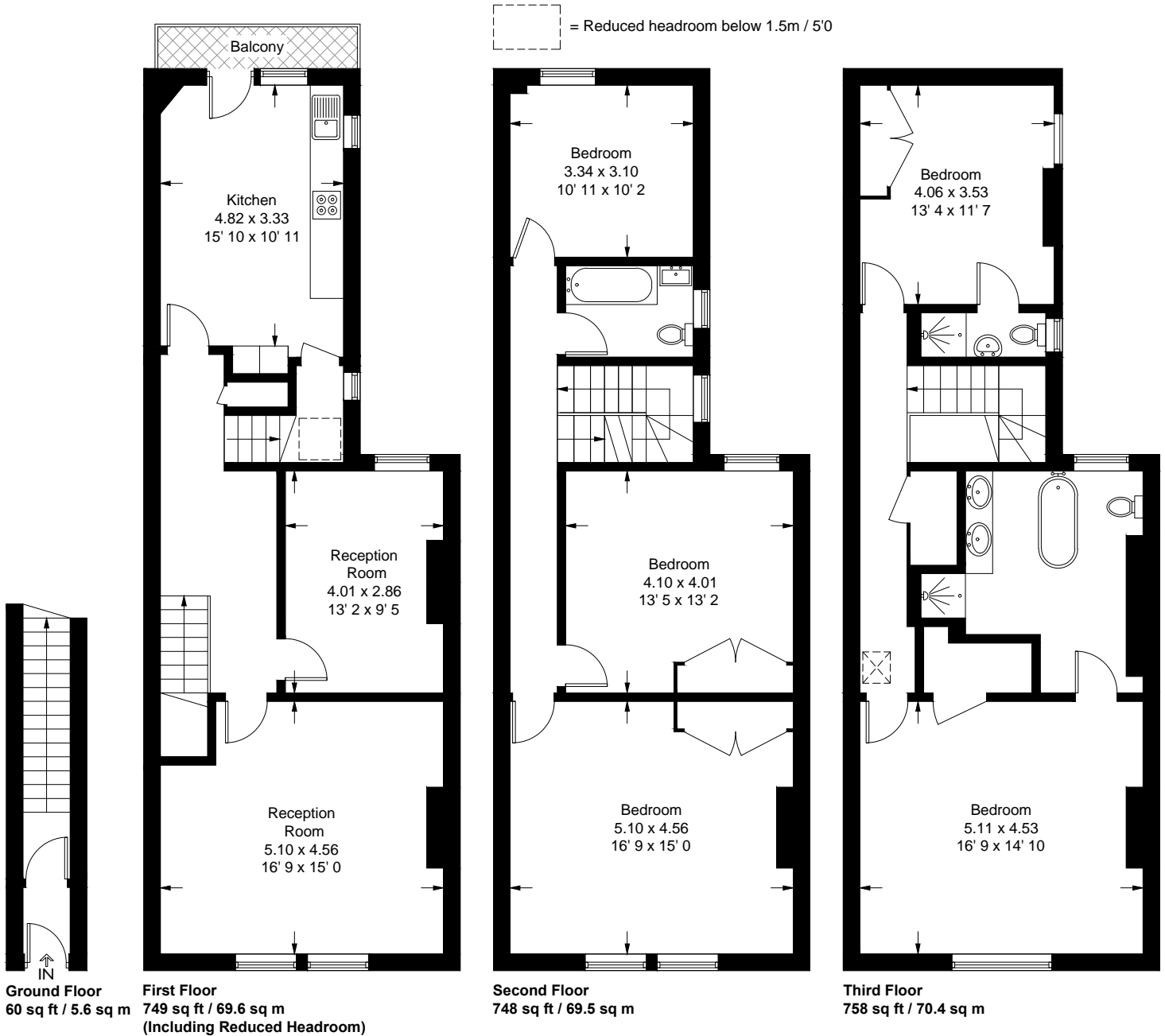


# King's Road

Approximate Gross Internal Area = 2309 sq ft / 214.5 sq m  
(Excluding Reduced Headroom)

Reduced Headroom = 6 sq ft / 0.6 sq m

Total = 2315 sq ft / 215.1 sq m



Not to scale, for guidance only and must not be relied upon as a statement of fact  
All measurements and areas are approximate only and have been prepared in accordance with the current edition of the RICS Code of Measuring Practice