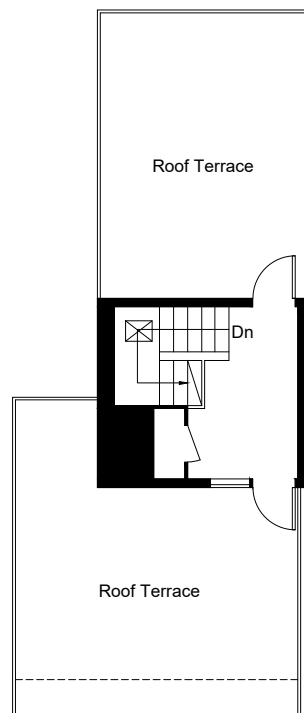
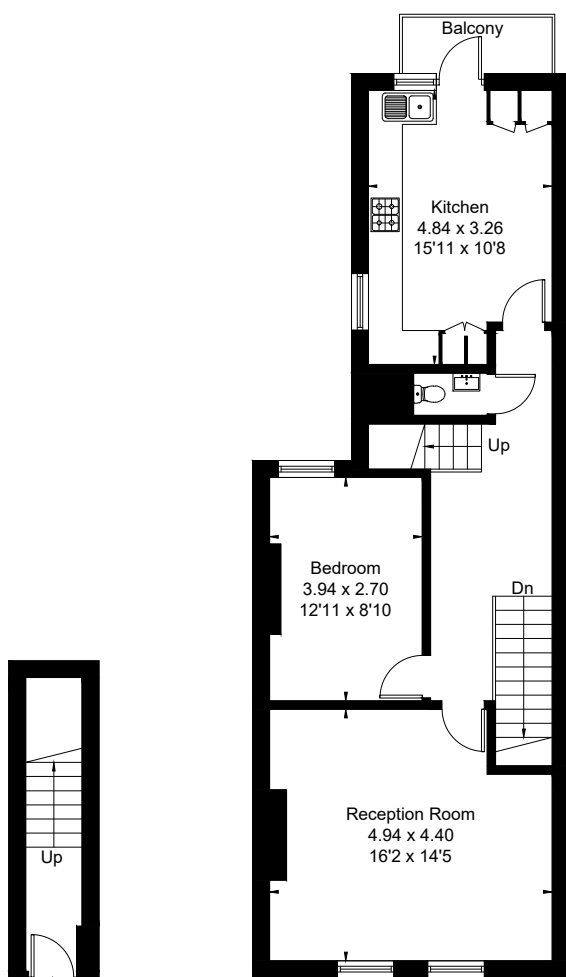


KINGS ROAD, SW3

Approximate Floor Area = 145.2 sq m / 1563 sq ft

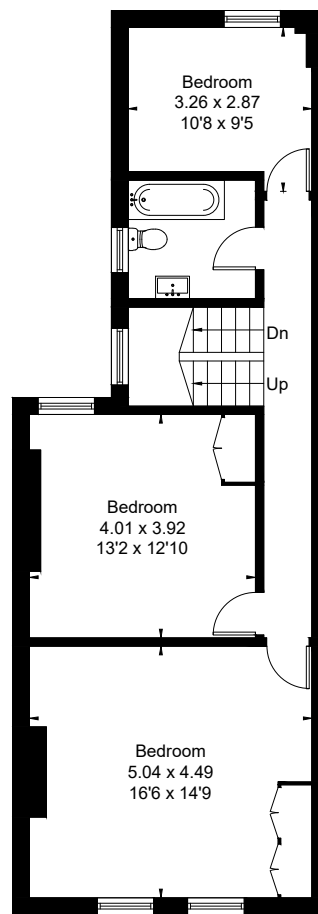


Third Floor



Ground Floor

First Floor



Second Floor



This floor plan has been drawn in accordance with RICS Property Measurement 2nd edition. All measurements, including the floor area, are approximate and for illustrative purposes only @djd.london #67861